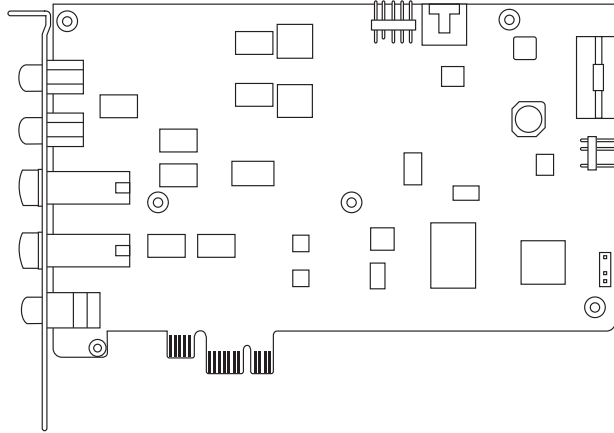




# Xonar Essence STX

## Audio Card



## Quick Start Guide

## Safety Information

- Before installing the device on a motherboard, carefully read all the manuals that came with the package.
- To prevent electrical shock hazard or short circuits, switch off the power supply before installing the device on a motherboard or connecting any singal cables to the device.
- If the device is broken, do not try to fix it by yourself. Contact a qualified service technician or your retailer.
- Before using the product, make sure all cables are correctly connected. If you detect any damage, contact your dealer immediately.
- To avoid short circuits, keep paper clips, screws, and staples away from connectors, sockets and circuitry.
- Avoid dust, humidity, and temperature extremes. Do not place the product in any area where it may become wet.
- Place the product on a stable surface.
- If you encounter technical problems with the product, contact a qualified service technician or your retailer.



This symbol of the crossed out wheeled bin indicates that the product (electrical and electronic equipment) should not be placed in municipal waste. Check local regulations for disposal of electronic products.

## Package Contents

This package should contain the following:

- ASUS Xonar Essence STX PCI Express audio card x1
- 3.5mm-to-RCA cable x1
- 3.5mm-to-6.3mm adapter x1
- S/PDIF TOSLINK optical adapter x1
- Support CD x1
- Audio Precision Test Report x1

## System Requirements

To ensure a successful installation of the the Xonar D1 audio card, your computer must meet the following requirements:

- One PCI Express 1.0 (or higher) compatible slot for the audio card
- Microsoft® Windows® 8.1 (32/64bit) / 8 (32/64bit) / 7 (32/64bit)
- Intel® Pentium® 4 1.4 GHz or AMD® Athlon 1400 CPU or faster CPU
- 256 MB (or above) DRAM system memory
- 60 MB available HDD space for driver installation package
- CD-ROM drive (or DVD-ROM drive ) for software installation
- High-quality headphones, powered analog speakers, or a Dolby Digital decoder, to enjoy the ultra-high fidelity sound of the card

## Driver Installation

After connecting the Xonar Essence STX audio card to your computer, you need to install the device driver that enables the Xonar Essence STX audio card to work with Windows operating system.

**IMPORTANT:** Ensure that you have installed the audio card driver before installing the Xonar Essence STX driver. Otherwise, driver installation error may occur.

To install the device driver:

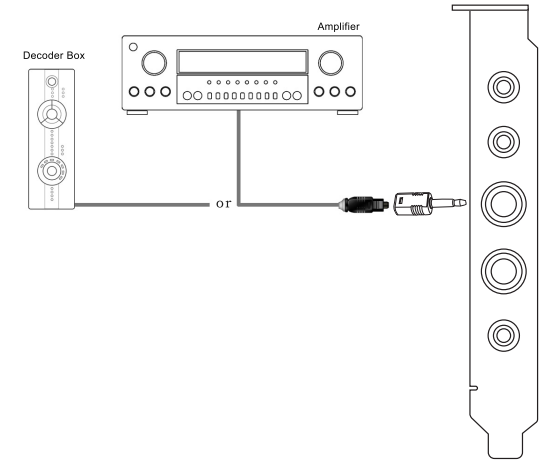
- After you have installed the Xonar Essence STX card, turn on your computer. Windows® automatically detects the HDAV card and searches for device drivers. When prompted for the drivers, click Cancel.
- Insert the support CD into the optical drive. If Autorun is enabled in your system, the setup starts automatically. If not, run setup.exe from your support CD.
- The installation program will remind you to make sure you have connected the additional power cable from your power supply unit to the card. If the power cable is not connected properly, the card will not work at all. If it has not been done, turn off the computer to install the power cable before you go on the installation process.
- Follow the onscreen instructions to complete the installation. Read the “END USER LICENCE AGREEMENT” in the process and make sure you understand and accept it before you continue the installation. When the installation finishes, you may be prompted to restart your computer. You can choose to restart the computer later if desired.

**NOTE:** Driver version and the contents of the support CD are subject to change without notice.

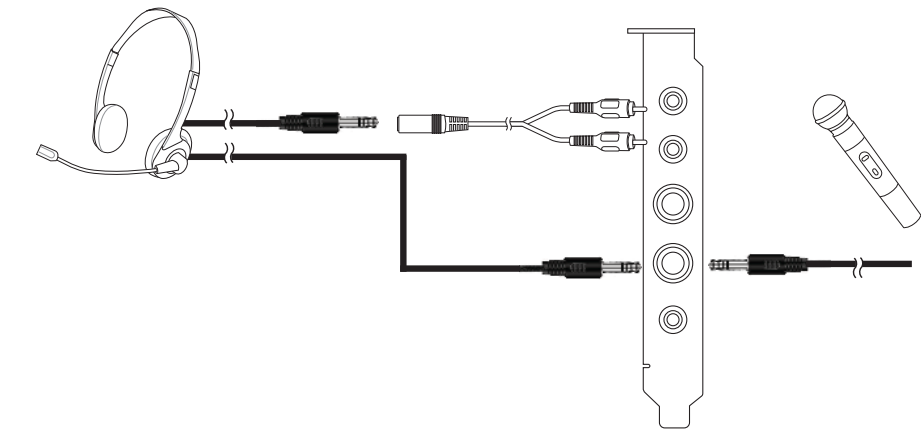
## Functionality

### Digital speakers

#### S/PDIF Out

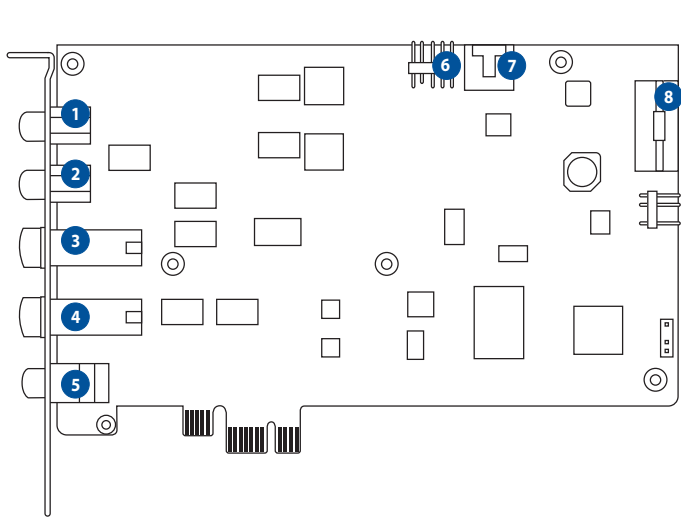


### Microphone / headphone



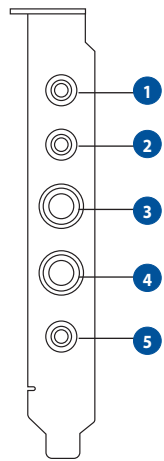
## Hardware Features

### Top view



### Side view

#### Audio ports



No.	Item	No.	Item
1	Front Right Out port	5	S/PDIF Out port
2	Front Left Out port	6	Front panel audio header
3	Headphone Out port	7	Aux Input Header
4	Microphone In port / Line In port	8	Power connector

### 繁體中文

- 右前喇叭輸出連接埠
- 左前喇叭輸出連接埠
- 耳機輸出連接埠
- 麥克風輸入連接埠 / 音源輸入連接埠
- S/PDIF 輸出連接埠
- 前面板音效插座
- Aux 輸入插孔
- 電源連接埠

### 简体中文

- 右前扬声器输出接口
- 左前扬声器输出接口
- 耳机输出接口
- 麦克风输入接口 / 音源输入接口
- S/PDIF 输出接口
- 前面板音频插座
- Aux 输入插孔
- 电源接口

### FRANÇAIS

- Port de sortie de signal avant droit
- Port de sortie de signal avant gauche
- Port de sortie casque
- Entrée microphone / Entrée audio
- Sortie S/PDIF
- Connecteur pour prises audio en façade de boîtier
- Entrée auxiliaire
- Connecteur d'alimentation

### DEUTSCH

- Front-Rechts-Ausgang
- Front-Links-Ausgang
- Kopfhörierausgang
- Mikrofoneingang / Line-In-Anschluss
- S/PDIF-Ausgang
- Frontpanel-Audiostiftleiste
- AUX-Eingangsstiftleiste
- Stromversorgungsanschluss

### ITALIANO

- Front Right Out port
- Front Left Out port
- Headphone Out port
- Porta ingresso microfono / Porta line in
- Porta uscita S/PDIF
- Header per il pannello frontale
- Header ingresso Aux
- Connettore di alimentazione

### 日本語

- フロントライト出力ポート
- フロントレフト出力ポート
- ヘッドホン出力ポート
- マイク / ライン入力ポート
- S/PDIF 出力ポート
- フロントパネル オーディオヘッダー
- Aux 入力ヘッダー
- 電源コネクタ

### РУССКИЙ

- Разъем Front Right Out
- Разъем Front Left Out
- Разъем наушников
- Разъем для микрофона / Аудиовход
- S/PDIF-выход
- Аудиоразъемы для передней панели
- Аудиовход
- Разъем питания

### 한국어

- 전면 오른쪽 출력 포트
- 전면 왼쪽 출력 포트
- 헤드폰 출력 포트
- 마이크 입력 포트 / 라인 입력 포트
- S/PDIF 출력 포트
- 전면 패널 오디오 헤더
- 외부 입력 헤더
- 전원 커넥터

## Hardware Features

- منفذ إخراج أيسر أمامي
- منفذ خرج سماعة الرأس
- منفذ إدخال الميكروفون / منفذ الإدخال الصوتي
- منفذ خرج S/PDIF
- رأس صوت اللوحة الأمامية
- رأس إدخال جهاز مساعد
- مُوصِّل الطاقة

### БЪЛГАРСКИ

- Десен изход отпред
- Ляв изход отпред
- Изход за слушалки
- Вход за микрофон / Line In порт
- S/PDIF изход
- Аудиоконектор на предния панел
- Конектор на Aux вход
- Конектор на захранването

### HRVATSKI

- Prednji desni izlazni priključak
- Prednji lijevi izlazni priključak
- Izlazni priključak slušalica
- Ulazni priključak za mikrofoni / Linijski ulazni priključak
- S/PDIF izlazni priključak
- Audio priključak na prednjoj ploči
- Priključak za pomoćni ulaz (Aux)
- Priključak za napajanje

### ČEŠTINA

- Port předního pravého výstupu
- Port předního levého výstupu
- Výstupní port pro připojení sluchátek
- Port vstupu mikrofoni / Port linkového vstupu
- Port výstupu S/PDIF
- Čelní panel zvuku
- Čelní externí vstup
- Konektor napájení

### DANSK

- Højre udgangsport på forsiden
- Venstre udgangsport på forsiden
- Hovedtelefonstik
- Mikrofonstik / Indgangsstik
- S/PDIF-udgangsstik
- Lydstik på frontpanel
- Aux-indgangsstik
- Strømsstik

### NEDERLANDS

- Uitgang rechts voor
- Uitgang links voor
- Hoofdtelefoonuitgang
- Microfooningang / Lijningang
- S/PDIF-uitgang
- Audiokop voorpaneel
- Aux-ingang kop
- Voedingsaansluiting

### SUOMI

- Oikea etulähtöportti
- Vasen etulähtöportti
- Kuulokelähtöportti
- Mikrofonin tuloportti / Linja sisään -portti
- S/PDIF-lähtöportti
- Etupaneelin audiopää
- Aux-tulopää
- Virtaliitäntä

### ΕΛΛΗΝΙΚΑ

- Εμπρόσθια δεξιά θύρα εξόδου
- Εμπρόσθια αριστερή θύρα εξόδου
- Θύρα εξόδου ακουστικών
- Θύρα εισόδου μικροφώνου / Θύρα γραμμής εισόδου
- Θύρα εξόδου S/PDIF
- Θύρα ήχου μπροστινής πλευράς
- Θύρα εισόδου Aux
- Συνδετήρας ενέργειας

### MAGYAR

- Elülső jobb oldalon lévő kimeneti port

### ESPAÑOL

- Puerto Salida derecha frontal
- Puerto Salida izquierda frontal
- Puerto Salida de auriculares
- Puerto Entrada de micrófono / Puerto de entrada de línea
- Puerto de salida S/PDIF
- Base de conexiones de audio del panel frontal
- Base de conexiones de entrada auxiliar
- Conector de alimentación

### SVENSKA

- Höger främre ut-port
- Vänster främre ut-port
- Hörlursutgång
- Mikrofon in-port / Ledning in-portt
- S/PDIF-utgång
- Frampanelens ljudrubrik
- Extra ingångskontakt
- Strömkontakt

### TÜRKÇE

- Sağ Ön Çıkış bağlantı noktası
- Sol Ön Çıkış bağlantı noktası
- Kulaklık Çıkışı bağlantı noktası
- Mikrofon Giriş bağlantı noktası / Hat Giriş bağlantı noktası
- S/PDIF Çıkış bağlantı noktası
- Ön panel ses bağlantısı
- Yardımcı Giriş Bağlantısı
- Güç Konektörü

### УКРАЇНСЬКА

- Порт виходу спереду праворуч
- Порт виходу спереду
- Порт виходу гарнітури
- Порт входу мікрофона / Порт лінійний вхід
- Вихідний вихід S/PDIF
- Аудіороз'єм на передній панелі
- Роз'єм додатковий вхід
- Роз'єм живлення

- Elülső bal oldalon lévő kimeneti port

- Fejhallgató-kimeneti port

- Mikrofon-csatlakozó port / Vonalszintű bemeneti port

- S/PDIF kimeneti port

- Előlapi hangcsatlakozó

- AUX bemeneti csatlakozó

- Tápfeszültség csatlakozó

### Bahasa Indonesia

- Port Out Kanan Depan
- Port Out Kiri Depan
- Port Out Headphone
- Port Input Mikrofon / Port Saluran Masuk
- Port Output S/PDIF
- Header audio panel depan
- Header Input Aux
- Soket Daya

### NORSK

- Fremre høyre utgangsport
- Fremre venstre utgangsport
- Hodetelefon-utgangsport
- Mikrofon-inngangsport / Linje inn-port
- S/PDIF ut-port
- Frontpanellydkontakt
- Aux-inngangskontakt
- Strømkontakt

### POLSKI

- Port wyjścia na głośnik przedni prawy
- Port wyjścia na głośnik przedni lewy
- Port wyjścia słuchawek
- Port wejścia mikrofonu / Conectori auriti magistrală PCI
- Port wyjścia S/PDIF
- Złącze głośnikowe audio na panelu przednim
- Złącze głośnikowe wejścia Auxs
- Złącze zasilania

### PORTUGUÊS

- Porta de saída Frente Direita
- Porta de saída Frente Esquerda
- Porta de saída de auscultadores
- Porta de entrada de microfone / Porta de entrada de linha
- Porta de saída S/PDIF
- Conector de áudio do painel frontal
- Conector de entrada Auxiliar
- Conector de alimentação

### ROMÂNĂ

- Mufă ieşire dreapta faţă
- Mufă ieşire stânga faţă
- Mufă ieşire cască
- Port de intrare microfon / Port intrare linie
- Port ieşire S/PDIF
- Distribuitor audio panou frontal
- Distribuitor intrare auxiliară
- Conector alimentare

### SRPSKI

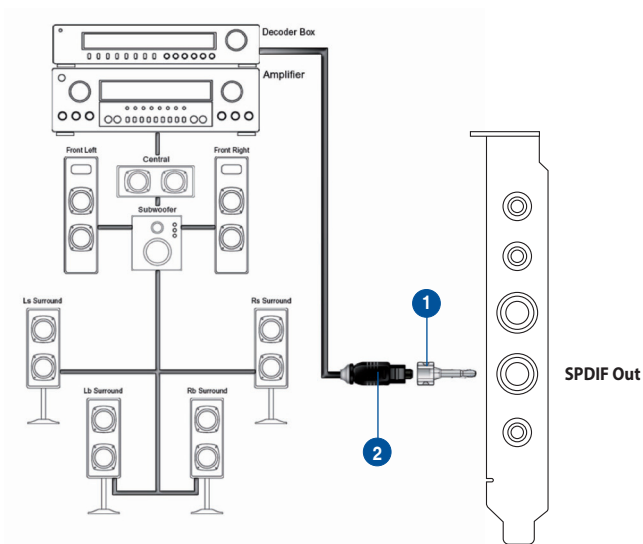
- Prednji desni izlazni port
- Prednji levi izlazni port
- Izlazni port za slušalice
- Port za ulaz mikrofona / Ulazni liijski port
- S/PDIF izlazni port
- Distributor audio panou frontal
- Pomoćni ulazni heder
- Priključak za napajanje

### SLOVENŠČINA

- Sprednja desna izhodna vrata
- Sprednja leva izhodna vrata
- Izhodna vrata za slušalke
- Vhodni priključek za mikrofoni / Vhodni priključek za zvok
- Izhodna vrata S/PDIF
- Priključek za zvok na sprednji plošči
- Priključek za kabel Aux
- Priključek za elektriko

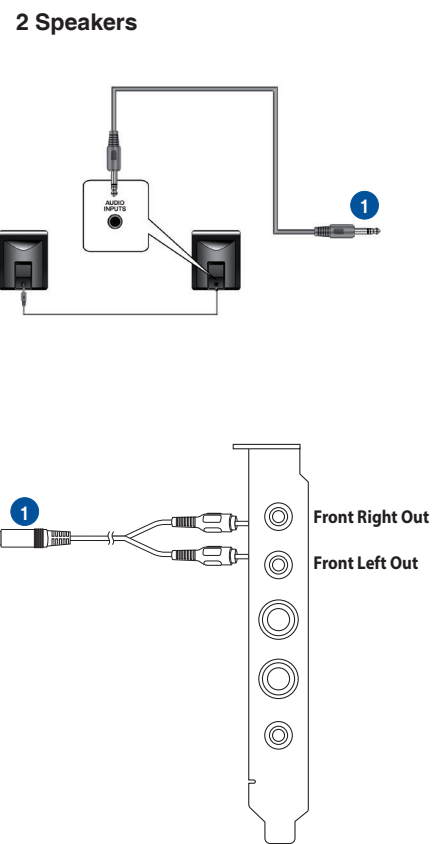
# Connectivity Options

## Connecting digital speaker systems (Home Theater)



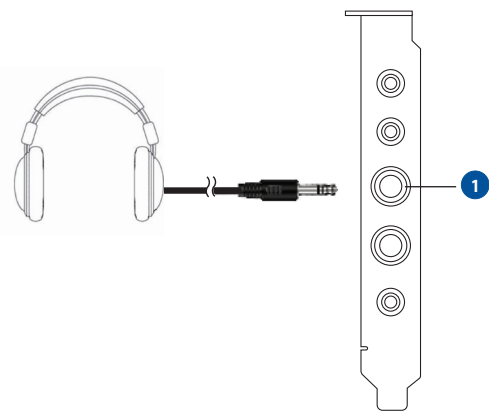
No	Item	Description
1	Optical adapter	Plug the optical TOSLINK adapter into the S/PDIF-Out connector.
2	Optical cable	Connect your decoder's S/PDIF-In port to the optical adapter with the TOSLINK optical cable.

## Connecting 2 channel speakers



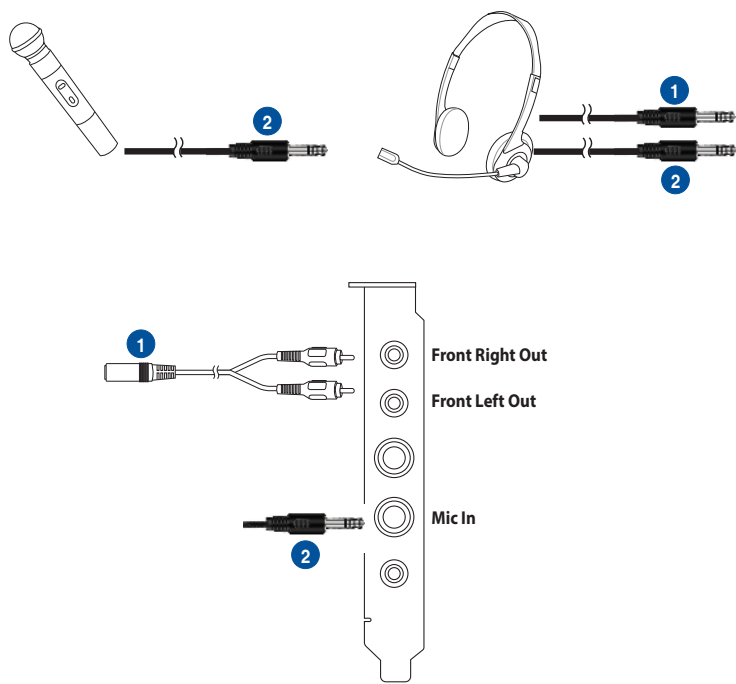
No	Item	Description
1	Front Left/Right Out	Connect the 2 speaker set's 3.5mm plug to the bundled RCA-to-3.5mm Y cable, and then connect the Left/Right ends to the Front Left/Right Out ports on the Xonar Essence STX card.

## Connecting stereo headphones



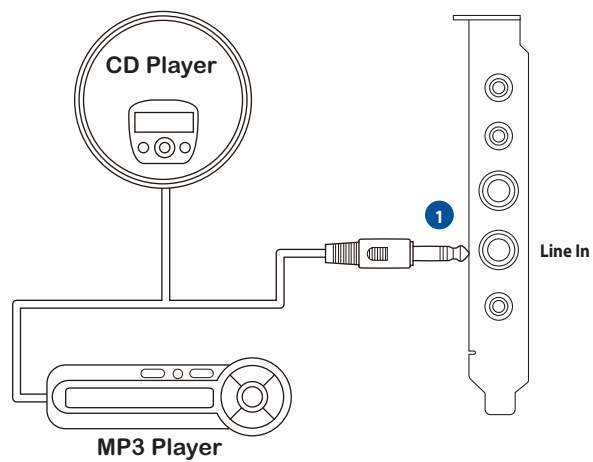
No	Item	Description
1	Front Out/Headphone Jack	The Front Out jack has a built-in high-quality amplifier to drive headphones. Connect your stereo headphones directly to this jack.

## Connecting microphone



No	Item	Description
1	Front Left/Right Out port/Headphone port	Connect the headphone's 3.5mm plug to the bundled RCA-to-3.5mm Y cable, and then connect the Left/Right ends to the Front Left/Right Out ports on the Xonar Essence STX card.
2	Microphone Input port	Connect your external PC microphone to this port by using the bundled 6.3mm-to-3.5mm adapter for voice communication, recording, or karaoke.

## Connecting Line-In audio sources



No	Item	Description
1	Line Input Jack	Connect the 3.5mm plug of the CD/MP3 Player or any other Line level analog audio sources into this Line-In jack for sound recording or real-time Dolby sound processing through the Monitoring path.

CE FC  
AEEE Yönetmeliğine Uygundur

ASUS  
Inspiring Innovation • Persistent Perfection

## ASUS WARRANTY UPDATE

From 1 January 2012 updated warranties apply to all ASUS products, consistent with the Australian Consumer Law.

For the latest product warranty details please visit: <http://support.asus.com>

Our goods come with guarantees that cannot be excluded under the Australian Consumer Law. You are entitled to a replacement or refund for a major failure and compensation for any other reasonably foreseeable loss or damage. You are also entitled to have the goods repaired or replaced if the goods fail to be of acceptable quality and the failure does not amount to a major failure.

If you require assistance please call ASUS Customer Service 1300 2787 88 | <http://support.asus.com>